

Gas Well Workshop

Online databases

Online databases are found on two websites, the Office of Oil and Gas on the West Virginia Department of Environmental Protection website and the West Virginia Geological and Economic Survey website.

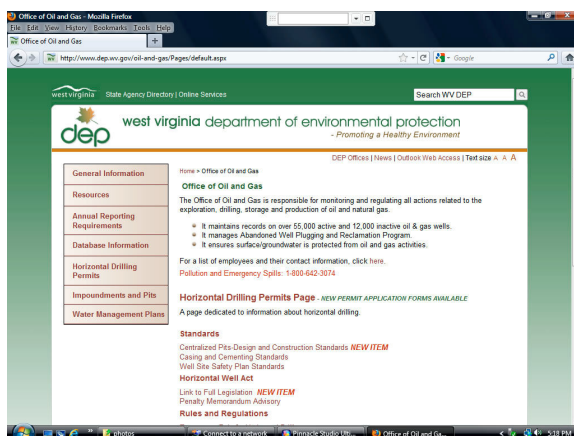
Note that links will have to be copied from this document and then pasted into the browser.

West Virginia Department of Environmental Protection

Office of Oil and Gas online databases

Online databases are accessed through the Office of Oil and Gas portal on the WV DEP website. The URL of the Office of Oil and Gas is:

<http://www.dep.wv.gov/oil-and-gas/Pages/default.aspx>



On the Office of Oil and Gas homepage you'll find notices of updated forms and other materials operators have to use. On the left sidebar is a link to Databases

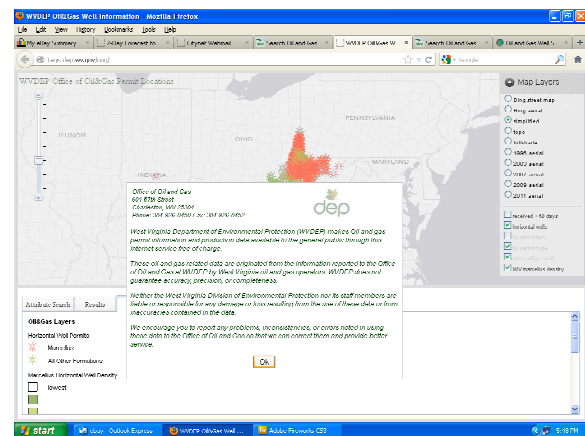
which when clicked will open up more links within the sidebar.

The Office of Oil and Gas databases that we most often use are:

Map Search <http://>

<http://tagis.dep.wv.gov/oog/>

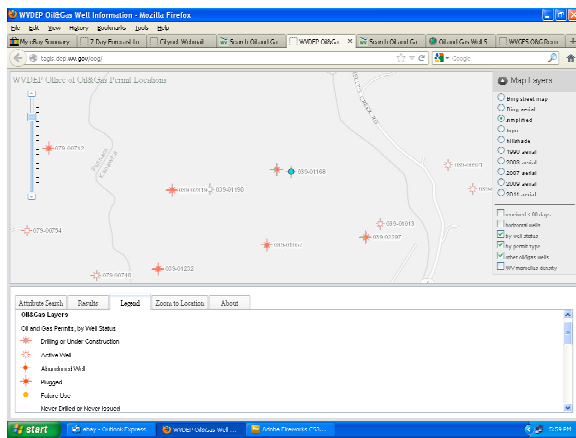
The new Map Search is best used if you have highspeed internet access though it does work with dialup.



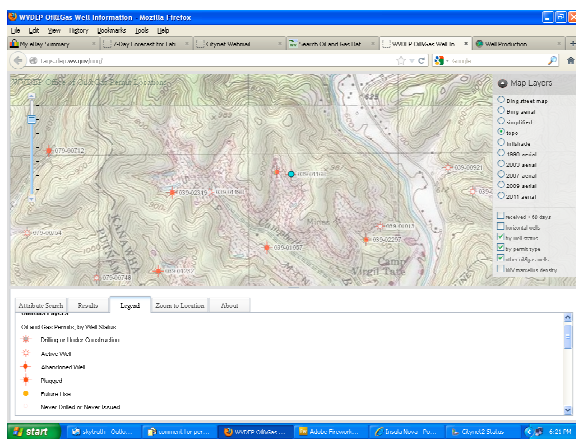
Click the Ok button in the box that appears when the map first appears. In the Map Layers box in the upper right hand corner deselect “horizontal wells” and “WV Marcellus density” and select “by well status.”

It's possible to enter an API number in the Attribute Search tab, or enter latitude and longitude or county in the Zoom to Location tab. If an API number was entered, it will appear in the Results

tab with more information about the well. Clicking on the item in the Results tab will bring that well to the center of the map.



The Legend tab shows the symbols for the different types of wells shown on the map. Moving closer (using the slider bar or buttons on the left hand side of the map) will bring wells' API numbers into view. Clicking on a well on the map will bring up production information and, in the Results Tab, other information about the well.



The Topo background locates the wells on a USGS topographical map background which is useful. This

background takes a while to load in dialup but the wait is worthwhile.

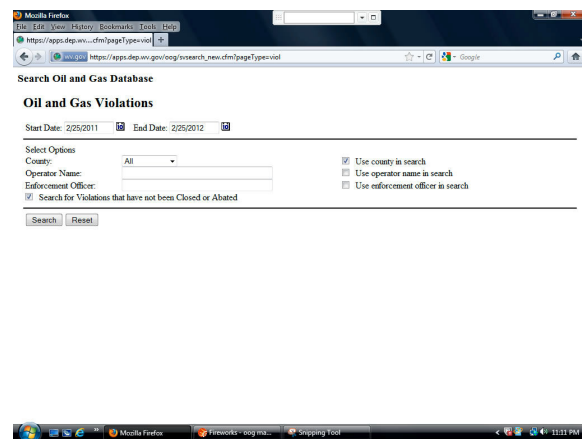
The online mapping tool takes a bit of time to get used to but it is an extremely handy resource.

Other Office of Oil and Gas Databases
<http://www.dep.wv.gov/oil-and-gas/databaseinfo/Pages/OGD.aspx>



Violations

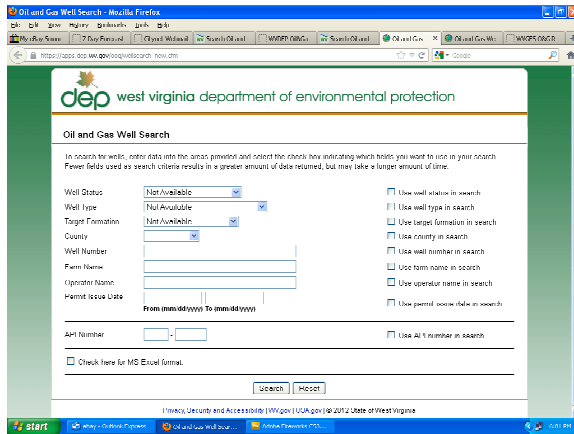
<http://www.dep.wv.gov/oil-and-gas/databaseinfo/Pages/OGD.aspx>



Search using date and one or more of the following criteria: county, operator or inspector.

Well Search

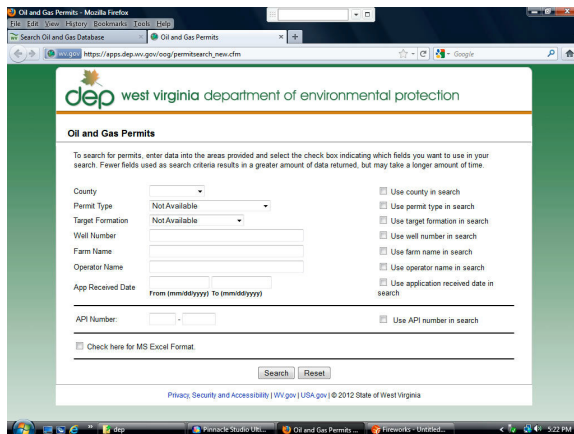
https://apps.dep.wv.gov/oog/wellsearch_new.cfm



Search using a variety of categories, either for information regarding a particular well or for groups or types of wells. This tool is useful, for instance, for searching for wells in a county, a particular operator's wells, or for types of wells such as abandoned. If you want you can have the results made available as a downloadable Excel file.

Permit Search

https://apps.dep.wv.gov/oog/permits_earch_new.cfm



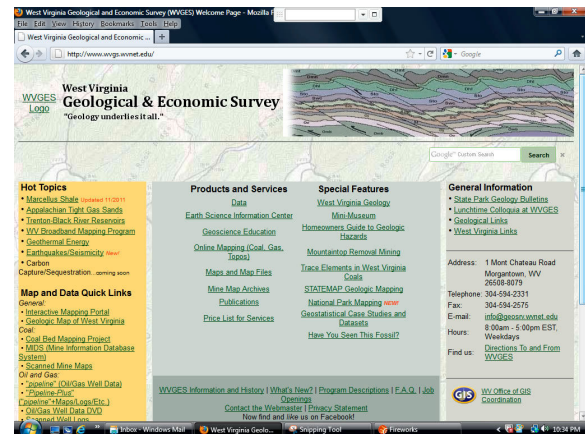
Search using a variety of criteria.

Searching alone for an API number will give a page with permit details, including dates of filing of the completion report, Discharge Monitoring Report, inspections, and so forth.

Searching for county, operator or other criteria will give broader results, including API numbers.

West Virginia Geological and Economic Survey online databases

<http://www.wvgs.wvnet.edu/>



This website has two useful database searches, Pipeline 2 and Pipeline Plus, when the API number is known.

Pipeline 2

<http://www.wvgs.wvnet.edu/oginfo/pipeline/pipeline2.asp>

G Record Reporting System

http://www.wvgs.wvnet.edu/oginfo/pipeline/pipeline2.asp

WVGES

Select County: (001) Barbour

Enter Permit #: 0

Get Data Reset

Select datatypes: (Check All)

☐ Location ☐ Production ☐ Plugging

☐ Owner/Completion ☐ Stratigraphy ☐ Sample

☐ Pay/Show/Water ☐ Logs ☐ Btm Hole Loc

Table Descriptions
County Code Translation
Permit Numbering Series
Usage Notes
Contact Information
Disclaimer
WVGES Main
Pipeline Plus New

our new "Pipeline-Plus". This system allows you to search oil & gas well header information plus other new features.

Usage Notes

DISCLAIMER REGARDING THE RELEASE OF DATA AND USER REQUIREMENTS

The West Virginia Geological and Economic Survey (WVGES) makes basic data available to the public from its computerized databases on the following conditions:

1. We believe the data in the WVGES computer databases to have been generated and assembled with a high degree of professionalism, accurate for the purposes for which they were originally intended. In this context, "data" refer to numerical and textual data (such as in the "pipeline" application as .tiff files), digital images (such as digital photographs), scanned records (such as completion reports), and spatial data (such as shapefiles). It is compiled from other sources and the WVGES accepts no responsibility for any inaccuracies in those data. Therefore, we cannot and do not, either explicitly, guarantee the accuracy, precision, or completeness of the data.
2. Neither the WVGES nor its staff members are liable or responsible for any damage or loss resulting from the use of the databases or from inaccuracies in the databases.

The county and last group of five digits for an API number is needed. Criteria that can be selected include location, operator (owner/completion on the search page), pay/show/water, production and other information.

Using this search tool for location gives a handy latitude/longitude or UTM location for use with a GPS.

Pipeline Plus

http://www.wvgs.wvnet.edu/pipe2/OGWISHelp.aspx

This is a group of databases. We have found the scanned documents most useful and that link is

http://downloads.wvgs.wvnet.edu/BatchInfo/ The right-hand column shows counties.

February 22, 2012	8:41 AM	<dir>	monrovia
March 22, 2011	4:08 PM	<dir>	monroe
October 13, 2009	1:10 PM	<dir>	morgan
February 22, 2012	8:41 AM	<dir>	nicholas
February 22, 2012	8:41 AM	<dir>	ohio
October 18, 2011	11:50 AM	<dir>	pendleton
February 22, 2012	8:41 AM	<dir>	pleasant
February 02, 2012	8:16 AM	<dir>	pocahontas
February 22, 2012	8:41 AM	<dir>	preston
February 22, 2012	8:41 AM	<dir>	putnam
February 20, 2012	2:24 PM	<dir>	raleigh
February 22, 2012	8:41 AM	<dir>	randolph
February 22, 2012	8:41 AM	<dir>	ritchie
February 23, 2012	3:15 PM	<dir>	roane
January 13, 2009	11:06 AM	<dir>	summers
February 22, 2012	8:41 AM	<dir>	taylor
December 22, 2011	1:16 PM	<dir>	tucker
February 20, 2012	2:24 PM	<dir>	tyler
February 22, 2012	8:41 AM	<dir>	upshur
February 20, 2012	2:24 PM	<dir>	wayne
February 09, 2012	2:37 PM	<dir>	webster
February 22, 2012	8:41 AM	<dir>	wetzel
February 20, 2012	2:24 PM	<dir>	wirt
February 20, 2012	2:24 PM	<dir>	wood
February 22, 2012	8:41 AM	<dir>	wyoming

Choose a county and a page will open with scanned completion reports, plats, and plugging reports for wells in that county according to the API number (the links in the right-hand column show the API number and file type - plug, comp, or plat).

15, 2007	3:05 PM	82052	4707901285plat0.tif
09, 2007	7:12 AM	49561	4707901286comp0.tif
09, 2007	12:17 PM	73145	4707901286plat0.tif
21, 2006	2:56 PM	39484	4707901287comp0.tif
09, 2007	12:17 PM	56912	4707901287plat0.tif
21, 2006	3:15 PM	39878	4707901288comp0.tif
23, 2006	11:27 AM	66881	4707901288plat0.tif
21, 2006	3:16 PM	62004	4707901289comp0.tif
08, 2006	3:22 PM	71703	4707901289plat0.tif
21, 2006	3:18 PM	48830	4707901290comp0.tif
23, 2006	11:10 AM	58917	4707901290plat0.tif
21, 2006	3:18 PM	51768	4707901291comp0.tif
23, 2006	11:26 AM	66148	4707901291plat0.tif
04, 2007	5:52 PM	47620	4707901292comp0.tif
30, 2006	3:59 PM	57335	4707901292plat0.tif
27, 2006	1:39 PM	58052	4707901293plat0.tif
03, 2010	11:45 AM	78772	4707901293plat0X.tif
21, 2006	3:19 PM	49712	4707901294comp0.tif
27, 2006	1:40 PM	63177	4707901294plat0.tif
04, 2007	5:53 PM	48351	4707901295comp0.tif
27, 2006	1:41 PM	58980	4707901295plat0.tif
04, 2007	5:53 PM	47329	4707901296comp0.tif
27, 2006	1:41 PM	58054	4707901296plat0.tif
04, 2007	5:55 PM	46713	4707901297comp0.tif

These are downloadable single or multipage image files. Completion reports are generally 2 pages. On our computer we have to click the default .tif file viewer's button to see the second page. We're able to print the pages through the default viewer program on Windows.